

# InstaFAN™



**5** Biopsy  
Specimens  
in **1** Pass

# Take 5 Biopsy Specimens in 1 Pass

InstaFan™ is the first disposable **multi-needle** EUS-FNA/B device, taking biopsies from five different locations in a tumor simultaneously, by combining two types of needles:



## Two Ways to Operate:

- 1 Only the Central Needle Handle** - works as FNB 22G needle.
- 2 All 5 Needles** - by pressing the Safety Release Button and pushing the Peripheral Needles's Handle.

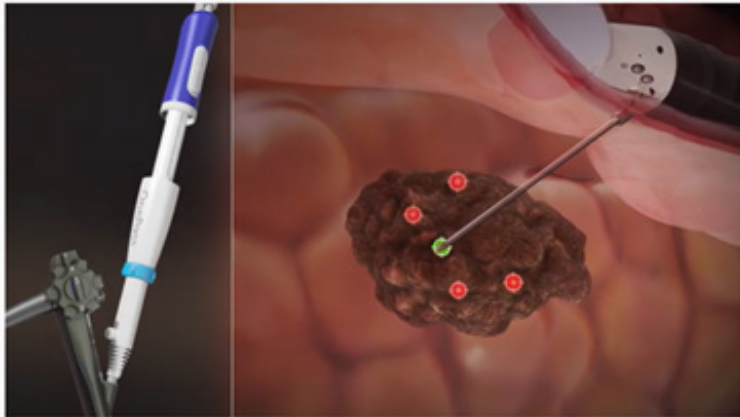


# InstaFan™ Workflow



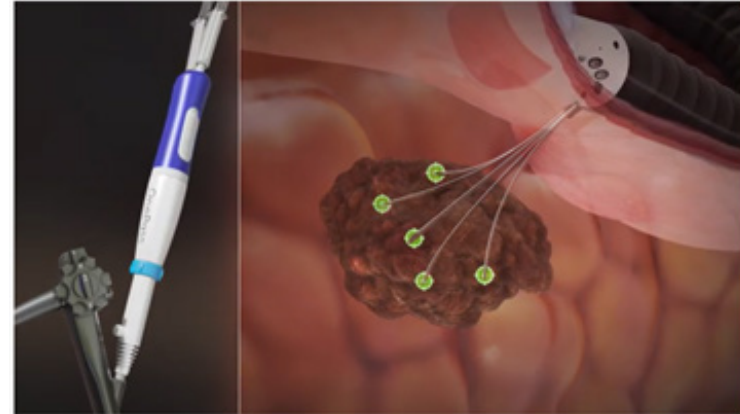
1

Central FNB needle deployed first



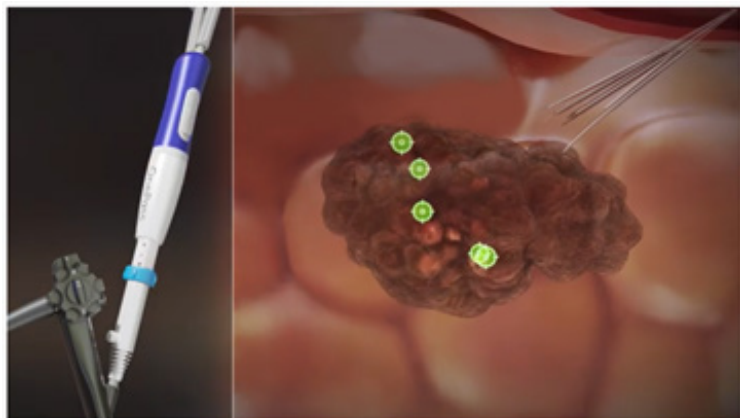
2

Four peripheral needles follow



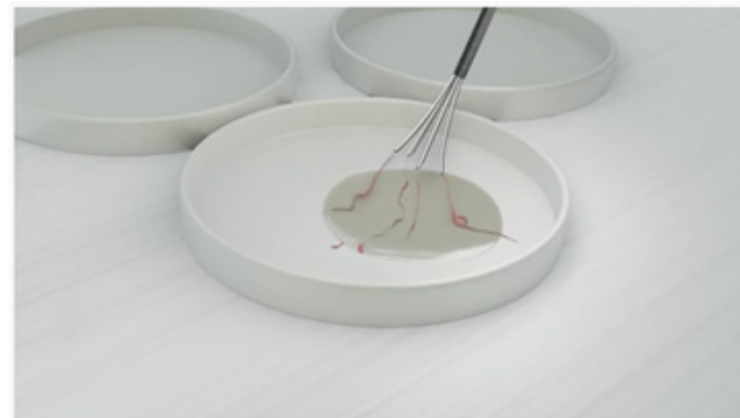
3

Five specimens taken and needles pulled out

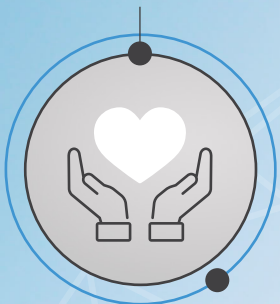


4

Biopsy specimens retrieved







## Saves Lives

**Multiple samples** with 3D spread in a single pass.

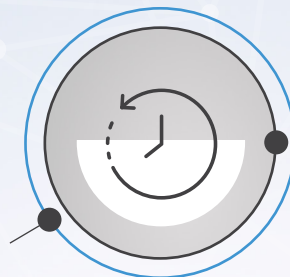
**No tract effect:** Needles reliably reach different sampling sites.

**Reduces procedure complexity** - No need for needle tilting/fanning.



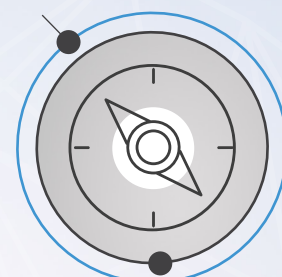
## Saves Money

Much lower chance of damage to the biopsy channel of the EUS scope or for a needle to break or kink.



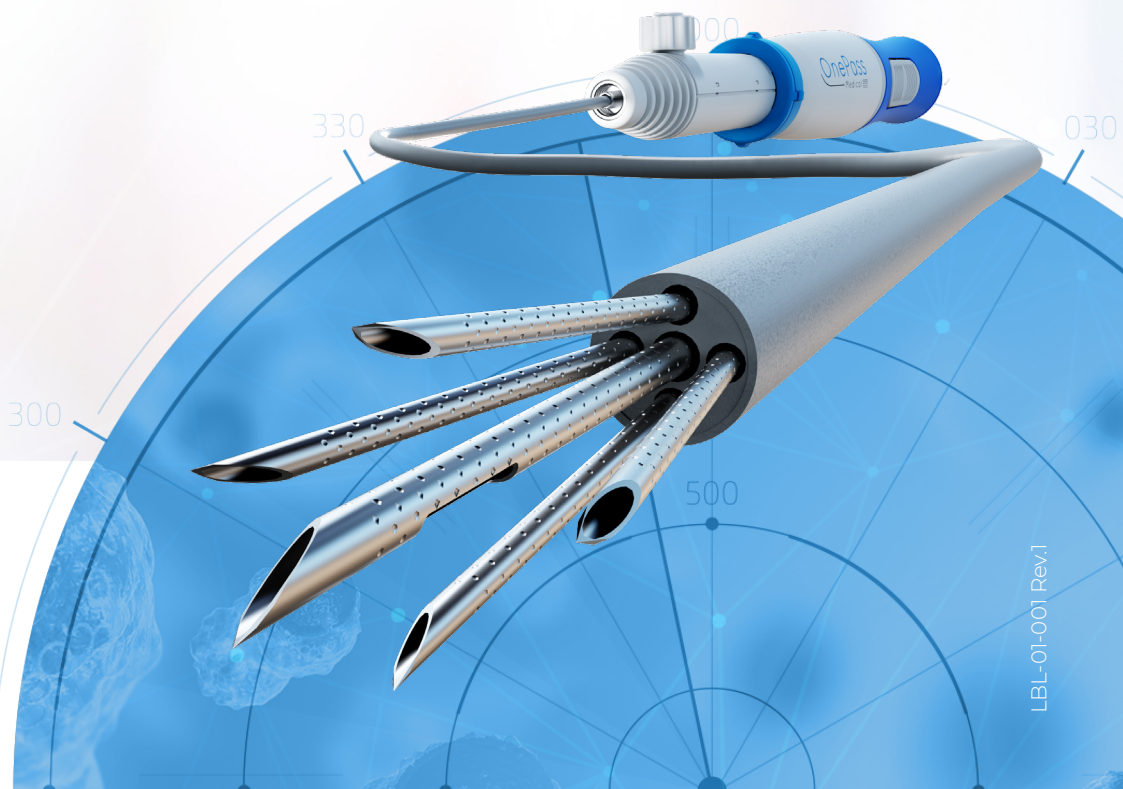
## Saves Time

Cuts procedure time in half - allows for more patients per day.



## Simple to use

Intuitive and based on existing tools, no need for special training.



InstaFan is  
approved by



Patents issued by

UNITED STATES  
PATENT AND TRADEMARK OFFICE



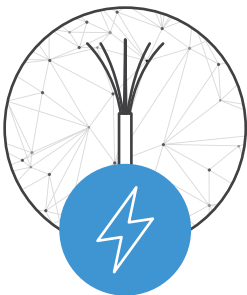
# InstaFan™ Specifications

Min. Working Channel	Max. Working Length	Max. Deploy Length	Central Needle	4 Peripheral Needles	Diameter of Peripheral Needles	Stylet Tip Shape
2.8 mm	1,400 mm	80 mm	22G FNB	4x25G FNA	10 mm at 30 mm deployment	Rounded

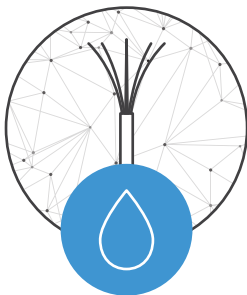
- Packaging includes 2 x 10cc syringes with vacuum holding devices.
- Working length: 1,375 mm to 1,415 mm, adjustable.
- Needles' deployment length: 0 mm to 80 mm, adjustable.

## Pipeline Products – All Based on InstaFan™

In the very near future, it will be possible to upgrade InstaFan™ into a **therapeutic delivery platform**. This upgrade will destroy tumor cells following a biopsy procedure by either:



**Focused RF Ablation**  
EUS-RFA treatments using the InstaFan™ as a **5 needles electrodes**. This allows a larger and accurate treatment area requiring less time and less energy.



**EUS Treatment**  
**Local Intratumoral Multipronged Drug Delivery** using the InstaFan™ as an adjuvant treatment to the standard systemic protocol for pancreatic cancer.



# InstaFAN<sup>TM</sup>

OnePass  
Medical

---

**Contact:** [info@onepassmedical.com](mailto:info@onepassmedical.com)

**Website:** [www.onepassmedical.com](http://www.onepassmedical.com)